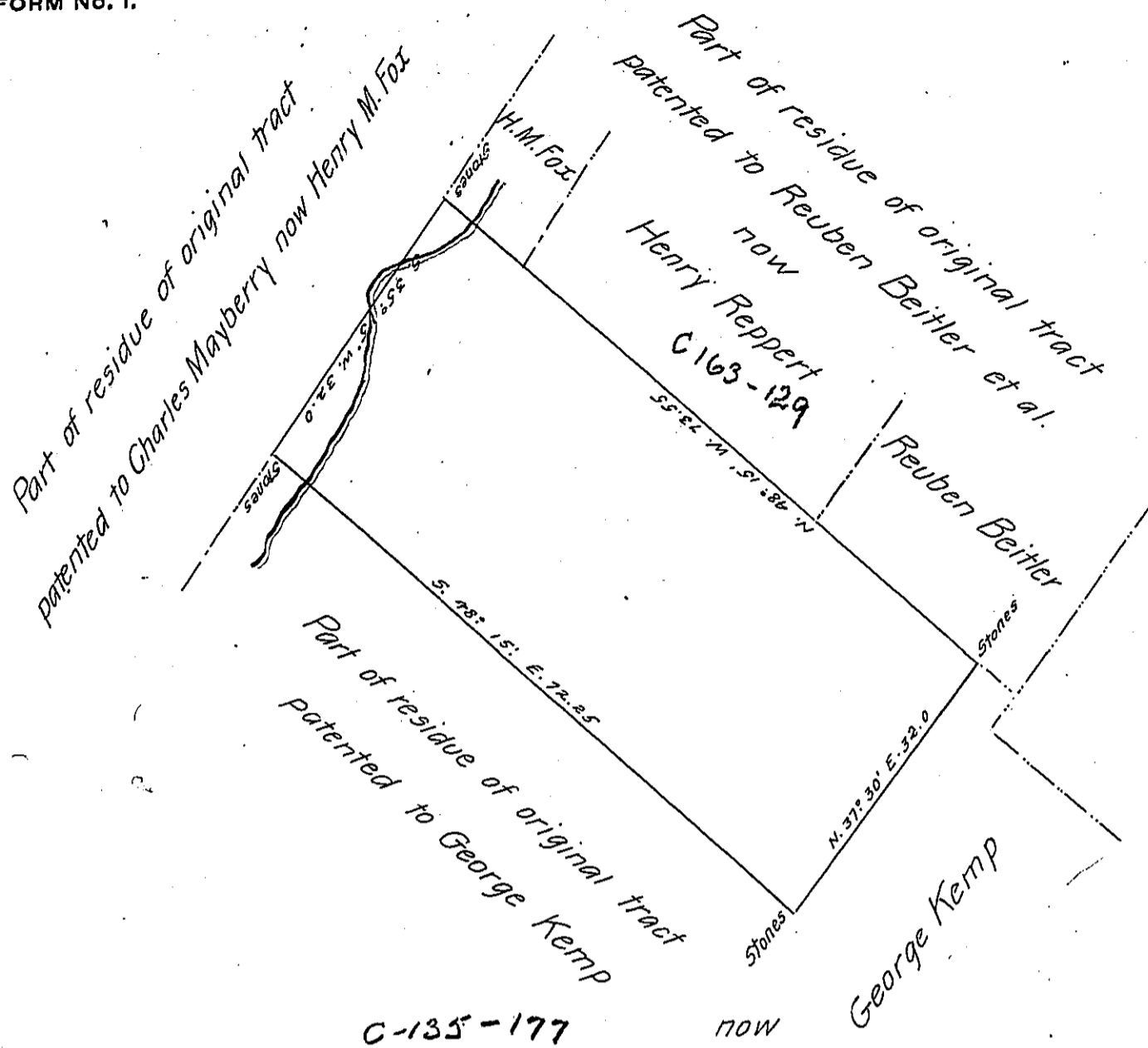


FORM No. 1.



C-135-177

now

Draft of a tract of land situate in the township of District, in the county of Berks containing thirteen acres one hundred and eleven perches and allowance of six per cent. for roads, &c. Surveyed for Abraham Benfield the twelfth day of March 1880; it being part of 1027 ac & allow. originally surveyed in pursuance of two warrants one dated May 4th 1744 granted to Thomas Mayberry and the other dated March 9th 1748⁹ granted to Sophia Mayberry in trust for the heirs of said Thomas Mayberry decd.

H. G. Zacharias C.S.

To Hon. Aaron K. Dunkel
 Secy Internal Affairs

IN TESTIMONY that the above is a copy of the original remaining on file in the Department of Internal Affairs of Pennsylvania, made conformably to an Act of Assembly approved the 16th day of February, 1833, I have hereunto set my Hand and caused the Seal of said Department to be affixed at Harrisburg, this tenth day of March 1906

Loac N. Brown
 Secretary of Internal Affairs.